

The Travel Trolley

Don't be a trolley wally, hop on board...

HOME NEWS FEATURED SEEING AMERICA GLOBETROTTING TRAVEL GUIDES ABOUT CONTACT NEWSLETTER

Latest November 30, 2014 in Featured: **The mystery of Stonehenge makes for a popular tourist attraction**

Home » Featured » The mystery of Stonehenge makes for a popular tourist attraction

The mystery of Stonehenge makes for a popular tourist attraction

Posted on November 30, 2014 by Todd DeFeo in Featured, Globetrotting // 0 Comments



Stonehenge (Photo by Todd DeFeo)

Like 16 Tweet 24 g+1 0

SALISBURY, England — For many, a visit to Stonehenge is an absolute must on a trip to England — and for good reason.

Like Big Ben in London, Stonehenge is one of the country's most recognizable symbols. It's a mysterious, yet alluring site that defies our collective explanation and even total understanding.

Search

To search, type and hit enter

Safari Power Saver
Click to Stop Flash Plug-in
40% OFF
YOUR PURCHASE
ENDS TODAY
SHOP NOW ▶
Online Only
SEE SITE FOR DETAILS

Hotels.com
Last Minute Deals
View deals

Recent Posts

- The mystery of Stonehenge makes for a popular tourist attraction
- Report: Curacao looking to add preclearance for U.S.-bound travelers
- Many Florida state parks open on Thanksgiving
- Ga. state parks to be open on Thanksgiving, Christmas and New Year's
- Salisbury, England, a perfect day trip from London
- Verrazano-Narrows Bridge celebrates 50 years
- World's tallest roller coaster set to open in Orlando in 2016
- Georgia Trust for Historic Preservation names 10 sites as Places in Peril
- Phil Collins donates Alamo collection
- For author, Paris' history, culture is the draw

Despite centuries of study and exploration, no one can give with 100 percent certainty the history of Stonehenge. New theories are floated almost as frequently as the afternoon tea is poured, yet there is no single agreement on when the monument was built or why.

But, that's a huge part of the draw. That's what keeps tourists from across the globe flocking back to this Neolithic monument.

To be sure, Stonehenge is one of the most famous monuments on the face of the Earth. Nearly a million people visit the monument every year.

“Stonehenge is popular because it’s big, simple, inexplicable and it’s got great PR,” said April Masini, an advice columnist. “Tourists always want to check things off their travel to-do lists, and when going to England, Stonehenge and Big Ben are probably on most people’s lists.

“They’re a lot easier to comprehend, ironically, than Parliament or British Theatre, which are just as unique,” Masini said. “The aura of mystery makes Stonehenge less intellectual and therefore, more accessible than some British attractions. In fact, for many tourists, it’s on par with crop circles and Roswell’s Area 51. It’s also a fabulous photo op that’s unique.”

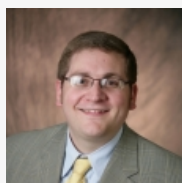
As the shirt in the gift shop says, “Stonehenge Rocks.”

England

Like 16

Tweet 24

+1 0



About Todd DeFeo (880 Articles)

Todd DeFeo loves to travel anywhere, anytime, taking pictures and notes. An award-winning reporter, Todd revels in the experience and the fact that every place has a story to tell. He is also editor of Railfanning.org.

Contact: Website

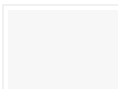
Related Articles



A brief history of Bath's Roman baths

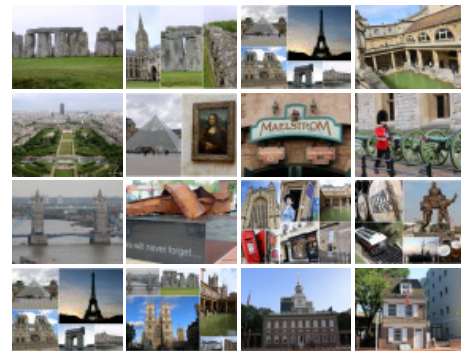


Waxwork figure of Jane Austen unveiled in Bath, England



World-renowned Lego Exhibition Builds its Way To London

Featured



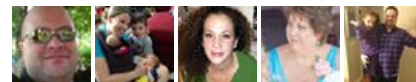
Stay Connected



The Travel Trolley

Like

22 people like The Travel Trolley.



Facebook social plugin

Authors



The Travel Trolley

published 1000 articles



Todd DeFeo

published 880 articles



West Center Street

published 204 articles



Railfanning.org News Wire

published 30 articles



Special to The Travel Trolley

published 29 articles



Voice of America

published 19 articles